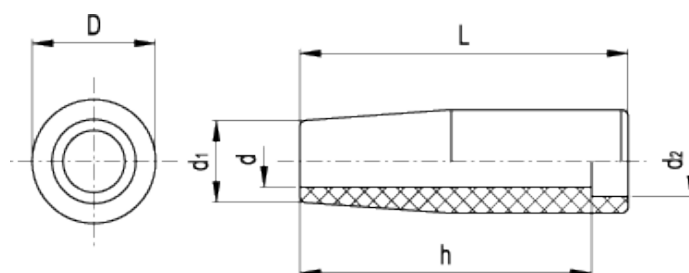


I.281

Revolving handles



technical informations

Material

Phenolic based (PF) Duroplast. Resistant to solvents, oils, greases and other chemical agents.

Colour

Black, glossy finish.

Assembly

Plain through hole.

Standard Elements		Main dimensions			Through hole			Weight
Code	Description	L	D	d ₁	d	d ₂	h	g
22301	I.281/40	39	18	15	8	12	35	10
22401	I.281/50	50	21	17	10	14	43	16
22501	I.281/65	64	23	19	12	16	56	22
22601	I.281/80	79	26	21	13	17	70	37
22701	I.281/90	89	28	22	14	19	79	49
22801	I.281/100	100	31	25	16	20	89	66



ELESA and GANTER models all rights reserved in accordance with the law. Always mention the source when reproducing our drawings.

STANDARD MACHINE ELEMENTS WORLDWIDE